

www.knights.uk.com

CARDIFF

VALE

CAERPHILLY

BRISTOL

Heathfield Drive





Comments by Miss Georgia Farr



Property Specialist
Miss Georgia Farr
Sales Negotiator

georgia@knights.uk.com

Heathfield Drive, Barry

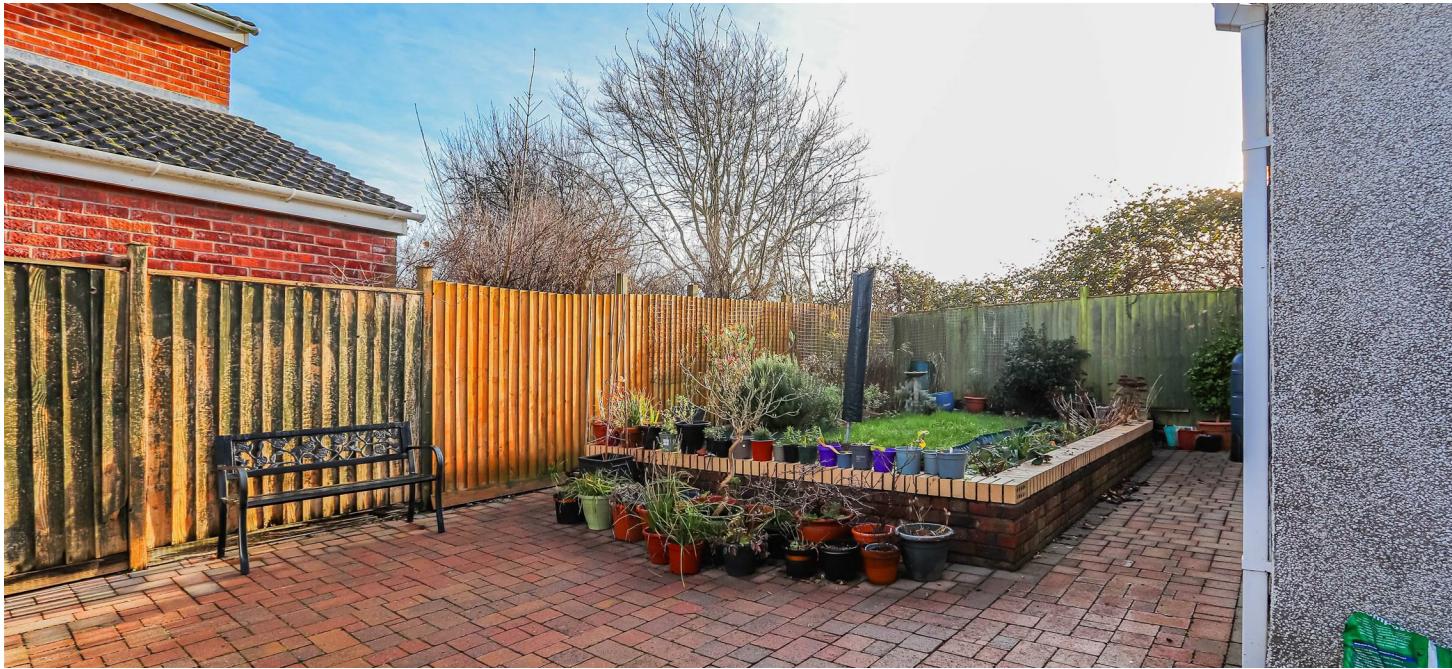
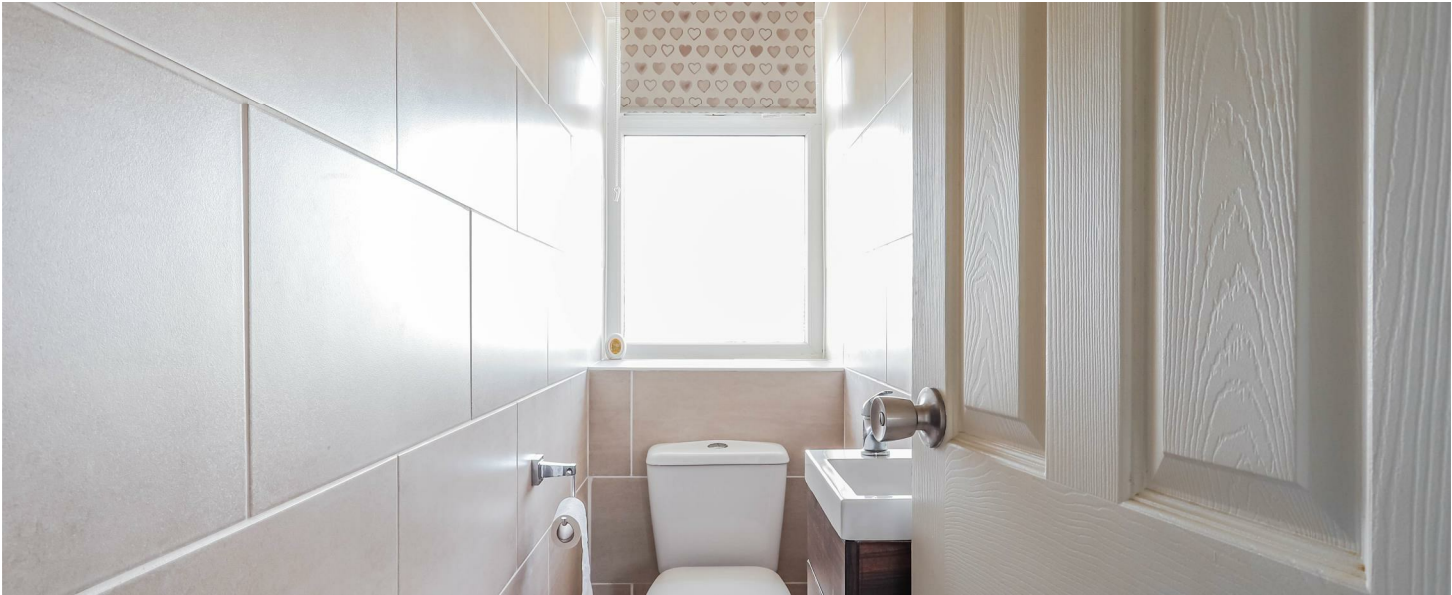


Total Area: 124.9 m² ... 1345 ft²

All measurements are approximate and for display purposes only



Comments by the Homeowner



Heathfield Drive

, Barry, CF62 9UG

Offers Over

£300,000



4 Bedroom(s)



1 Bathroom(s)



1345.49 sq ft



Contact our
Knights Barry Branch
01466 700222

Situated in the charming area of Heathfield Drive, Barry, this delightful end-terrace house offers a perfect blend of space and comfort. With a generous 1,345 square feet of living area, this property is ideal for families or those seeking ample room to entertain.

The house boasts five well-proportioned reception rooms, providing versatile spaces that can be tailored to your lifestyle. Whether you envision a cosy family lounge, a formal dining area, or a vibrant playroom, the possibilities are endless. The four bedrooms are thoughtfully designed to ensure restful nights and personal retreats for all family members.

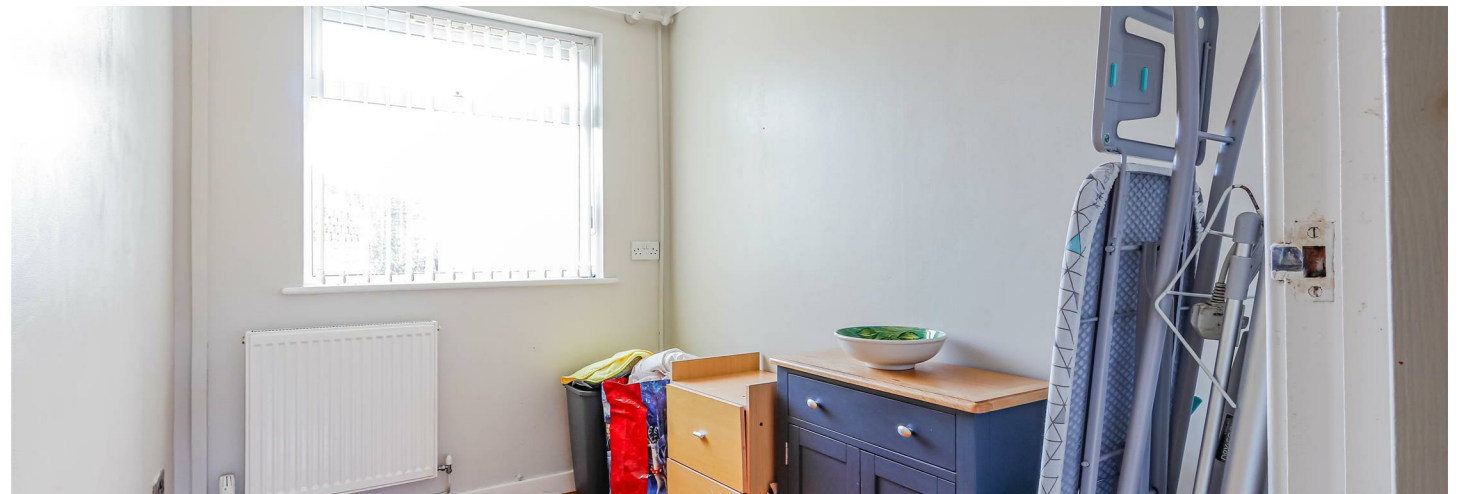
The property features a well-appointed bathroom, catering to the needs of a busy household. The layout of the home promotes a sense of flow and connectivity, making it easy to enjoy both quiet moments and lively gatherings.

Situated in a friendly neighbourhood, this home is conveniently located near local amenities, schools, and parks, making it an excellent choice for families. The end-terrace position offers added privacy and a sense of space, with potential for outdoor enjoyment.

This property presents a wonderful opportunity to create lasting memories in a welcoming environment. If you are looking for a spacious family home in Barry, this end-terrace house on Heathfield Drive is certainly worth considering.



PORCH 6'03" x 3'06" (1.91m x 1.07m)	BEDROOM TWO 11'01" x 8'0" (3.38m x 2.44m)
HALLWAY 3'02" (0.97m)	BEDROOM THREE 8'11" x 10'02" (2.72m x 3.10m)
WC 2'06" x 5'02" (0.76m x 1.57m)	BEDROOM FOUR 8'10" x 7'08" (2.69m x 2.34m)
LIVING ROOM 10'10" x 14'03" (3.30m x 4.34m)	WC 2'04" x 7'08" (0.71m x 2.34m)
BATHROOM 5'01" x 7'04" (1.55m x 2.24m)	
KITCHEN 8'09" x 10'01" (2.67m x 3.07m)	
DINING ROOM 10'10" x 10' (3.30m x 3.05m)	
LOUNGE 9'09" x 14'00" (2.97m x 4.27m)	
RECEPTION ROOM 13'01" x 9'01" (3.99m x 2.77m)	
STUDY 6'02" x 8'09" (1.88m x 2.67m)	
BEDROOM ONE 13'04" x 10'10" (4.06m x 3.30m)	





Energy Efficiency Rating		
	Current	Potential
Very energy efficient - lower running costs		
(92 plus) A		
(81-91) B		
(69-80) C		
(55-68) D		
(39-54) E		
(21-38) F		
(1-20) G		
Not energy efficient - higher running costs		
England & Wales	EU Directive 2002/91/EC 	

